

# St. Mary Magdalen Catholic Parish



CELEBRATING  
100 YEARS

Rev. Nicholas Glisson, Pastor. The Most Reverend Michael Barber, SJ, Bishop – Diocese of Oakland

## WEEKEND MASSES

Saturday 5:30 pm  
Sunday 8:00, 9:30, 11:30 am

## DAILY MASS SCHEDULE

Tuesday-Thursday & Saturday 8:30 am  
Monday/Wednesday/Friday 5:30 pm

## LITURGY OF THE HOURS

Monday – Saturday 8:00 am  
Mon./Wed./Friday 5:10 pm

## SACRAMENT OF RECONCILIATION

Saturday 4:00 to 5:00 pm  
(and by appointment)

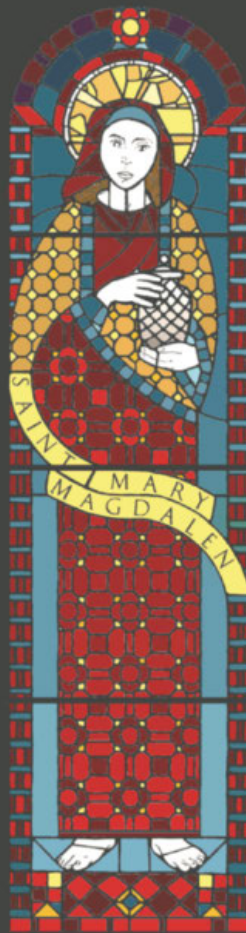
## OFFICE HOURS

Monday – Friday  
9:00 am – Noon  
1:00 pm – 5:00 pm  
Phone: 510-526-4811  
Fax: 510-525-3638

WEBSITE



marymagdalen.org



David Lance Goines, 2002

**Fr. Nicholas Glisson**, *Pastor*  
[pastor@marymagdalen.org](mailto:pastor@marymagdalen.org)  
(ext. 112)

**Norah Hippolyte**, *Pastoral Associate & Business Manager*  
[nhippolyte@marymagdalen.org](mailto:nhippolyte@marymagdalen.org)  
(ext. 111)

**Andy Canepa**, *Music Director*  
[acanepa@marymagdalen.org](mailto:acanepa@marymagdalen.org)

**Heather Skinner**  
*Director of Religious Education*  
[hskinner@themadeleine.com](mailto:hskinner@themadeleine.com)

**Deacon Jeff Burns**  
*Director of Parish Renewal*  
[jburns@marymagdalen.org](mailto:jburns@marymagdalen.org)

**Fr. Wilson Sagayaraj, SVD**  
*Priest-in-Residence*  
[wsagayaraj@marymagdalen.org](mailto:wsagayaraj@marymagdalen.org)

**Fr. Sebastian Titus**  
*Priest-in-Residence*  
[stitus@marymagdalen.org](mailto:stitus@marymagdalen.org)

**Cat Nielsen**, *Parish Technologist / Adult Faith Formation* (ext. 113)  
[website@marymagdalen.org](mailto:website@marymagdalen.org)

**Oscar Guillen**, *Facilities Supervisor*  
**Ana Guillen**, *Housekeeper*

**Gina Ramos Campbell**,  
*Convener*

**Parish Pastoral Council**  
[ppc@marymagdalen.org](mailto:ppc@marymagdalen.org)

**Georganne Perkins**, *Convener*  
**Parish Finance Council**  
[georganne.perkins@gmail.com](mailto:georganne.perkins@gmail.com)

**Laura Morland**, *Volunteer Bulletin Editor* (ext. 118)  
[bulletin@marymagdalen.org](mailto:bulletin@marymagdalen.org)

**St. Vincent de Paul** (ext. 787)  
[svdp@marymagdalen.org](mailto:svdp@marymagdalen.org)

**School of the Madeleine**  
1225 Milvia Street  
Berkeley, CA 94709  
(510) 526-4744

**Joseph Nagel**, *Principal*  
[jnagel@themadeleine.com](mailto:jnagel@themadeleine.com)

**Jennifer Walwark**  
*Vice-Principal*  
[jwalwark@themadeleine.com](mailto:jwalwark@themadeleine.com)

**Heather Skinner**  
*Vice-Principal*  
[hskinner@themadeleine.com](mailto:hskinner@themadeleine.com)

**Mary Schweska**, *Secretary*  
[madmary@themadeleine.com](mailto:madmary@themadeleine.com)

CFCS Funeral Services 510-223-2165

*“Together we share our  
Faith in Jesus Christ.*

*We live the Gospel,  
and we care for others.”*

**BAPTISM:** Preparation classes take place on the first Monday of the month. Please call the parish office for more information.

**CONFIRMATION:** Classes run from September through May; contact the office for more information.

**MARRIAGE:** Please contact the pastor at least six months prior to the wedding.

**ANOINTING OF THE SICK:** The Sacrament is offered at every 5<sup>th</sup> Sunday Mass, and by appointment.

# Christ the King of the Universe, Year B ~ November 24<sup>th</sup>, 2024

Quarterly Report for Ministry Donations	
<b>Total Collected—3rd Quarter 2024</b>	<b>\$12,706.40</b>
Food for the Poor (Sunday Dinners)	\$3,565.05
Mexicali Mission (Sister Parish)	\$340.00
Scholarship Fund (Sister Parish)	\$255.00
Refugee Aid / Social Justice	\$325.00
Racial Equity Committee	\$86.00
St. Vincent de Paul Conference	\$2,402.26
School of the Madeleine	\$2,739.76
Capital Repair & Improvement	\$1,030.00
Mary Magdalen Music Ministry	\$1,963.33

This QR code leads to the Parish Donation page—use it to verify or raise the amounts of your monthly giving.



[tinyurl.com/SMM-Donations](https://tinyurl.com/SMM-Donations)

## Scripture Readings for the Week

- 24<sup>th</sup> **CHRIST THE KING OF THE UNIVERSE**  
Daniel 7:13-14 / Revelations 1:5-8 / John 18:33-37
- 25<sup>th</sup> *Weekday [St. Catherine of Alexandria, Martyr]*  
Revelations 14:1-3, 4b-5 / Luke 21:1-4
- 26<sup>th</sup> *Weekday*  
Revelations 14:14-19 / Luke 21:5-11
- 27<sup>th</sup> *Weekday*  
Revelations 15:1-4 / Luke 21:12-19
- 28<sup>th</sup> *Weekday [Thanksgiving Day]*  
Revelations 18:1-2, 21-23; 19:1-9 / Luke 21:20-28
- 29<sup>th</sup> *Weekday*  
Revelations 20:1-4, 11-21:2 / Luke 21:29-33
- 30<sup>th</sup> *Weekday*  
Romans 10:9-18 / Matthew 4:18-22

## Mass Intentions

Saturday	5:30	Julie Carter
Sunday	8:00	Wilhelmine Reiger Hirsch RIP
	9:30	The Souls in Purgatory
	11:30	For the People of the Parish
Monday	5:30	Intentions of Maria Baalbaki
Tuesday	8:30	John Betschart RIP
Wednesday	8:30	Intentions of Mai Baalbaki
	5:30	Rosemary Dodds RIP
Thursday	8:30	Owen Basil Fitzgerald RIP
Friday	5:30	Intentions of Fr. Anthony Nwankwo
Saturday	8:30	Charles & Hazel Hippolyte RIP

## Parish Calendar through December 1<sup>st</sup>, 2024

November 22	Friday	Pray the Rosary for Peace in Ukraine & Gaza 3:00 pm, Church
November 22	Friday	Mary Magdalen Men's Group 6:00 pm, Norton Hall; dinner in Rectory
November 23	Saturday	Vox Alta: <i>Autumn Landscapes</i> 2:30 pm, Church. (Freewill donation.)
November 23/24	Weekend	Preacher at Weekend Masses: Deacon Jim 5:30 pm Saturday; 8:00 / 9:30 / 11:30 am Sunday
November 24	Sunday	Fourth Sunday Dinner for the Hungry Noon - 4:00 pm, Norton Hall ( <i>Desserts wanted!</i> )
November 26	Tuesday	Reflection on the Sunday Gospel Zoom link: 2:00 - 3:00 pm, <a href="https://tinyurl.com/SMM-GospelGroup">tinyurl.com/SMM-GospelGroup</a>
November 26	Tuesday	Adult Christian Initiation 7:00 pm, Norton Hall <a href="mailto:initiation@marymagdalen.org">initiation@marymagdalen.org</a>
November 27	Wednesday	NO Meeting of SPRED Catechism (Thanksgiving vacation)
November 28	Thursday	THANKSGIVING One Mass at 10:00 am
November 29	Friday	Reflection on the Sunday Gospel 9:15 - 10:15 am, Norton Hall
Nov. 30/ Dec. 1	Weekend	Preacher at Weekend Masses: Deacon Jim 5:30 pm Saturday; 8:00 / 9:30 / 11:30 am Sunday

## Help the Hungry in our own Magdalen Hall

This Sunday is our **Fourth Sunday Dinner for the Hungry**. Could you spend one hour downstairs in Magdalen (Parish) Hall sometime today from Noon to 4:00 pm? Or do you have a child who may have a "volunteer hours" requirement?

You are very welcome to come help set up or serve our guests (*see below*), but **we especially need volunteers to clean the kitchen and Magdalen Hall**.

We set up from **Noon to 1:00 pm**, prepare to serve at **2:15 pm**, and then we start cleaning the kitchen at **2:30 pm** and putting away tables and chairs at **~3:30 pm**.

## Attention All Bakers!

Our guests like sweets and really appreciate your desserts. You may drop them off during Coffee Hour or in the Magdalen kitchen until 1:30 pm.



For more info:

[sundaydinners@marymagdalen.org](mailto:sundaydinners@marymagdalen.org)



# Funeral for Lifelong Parishioner Mark Kelly (1959-2024)

At 11:00 am last Saturday, the church was packed with mourners for Mark Louis Kelly, a true son of our parish. The eldest son of devoted parishioners Paul and Joanne Kelly, Mark graduated from the School of the Madeleine in 1973 and remained an active alum his whole life. He earned a B.A. in architecture from UCB, and was a lifelong fan of Cal football, rarely missing a game. For thirty-three years he ran his own construction company, lending his talents to the parish during our church remodel in 1999. Mark loved jazz (he played tenor saxophone in St. Mary's HS jazz band) and attended jazz concerts all over the Bay Area.



Pianist Joan Bell and Cantor Jennifer Ashworth (right rear) provided gorgeous music for Mark's service.

As his brothers David, Eric, and Chris wrote in his funeral program, "Mark's legacy is one of steady devotion, quiet strength, and gentle humor. He will be missed, but his impact remains present in every life he touched, and every memory he leaves behind."

## The Kids' Bulletin

*Feast of Christ the King*

*Sunday, November 24th, 2024*



**Jesus is Our King!**

*Today we celebrate Jesus as the great Lord and King of Heaven and earth.*

*The crown is a symbol of Jesus' kingship.*

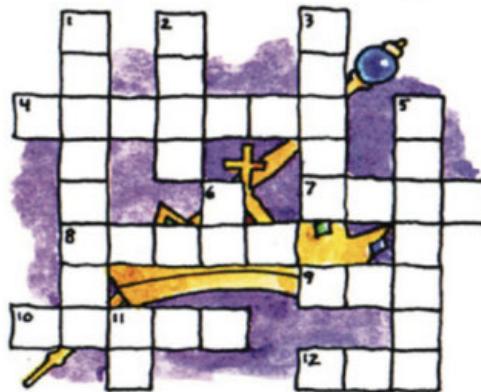
thekidsbulletin.com

## Christ the King Crossword

*Revelation 1:5-7*

*Here is a part of today's second reading. Use the words at the bottom to fill in the blanks and the puzzle.*

*D=down  
A=across.*



(3D) \_\_\_\_\_ Christ is the (1D) \_\_\_\_\_  
 (4A) \_\_\_\_\_, the firstborn (11D) \_\_\_\_\_  
 the dead and ruler of the (2D) \_\_\_\_\_s of  
 the earth. To (12A) \_\_\_\_\_ who loves us and  
 has (8A) \_\_\_\_\_ us from our (7A) \_\_\_\_\_  
 by his blood, who has made us into a  
 (5D) \_\_\_\_\_, priests for his (9A) \_\_\_\_\_ and  
 Father, to him (6D) \_\_\_\_\_ (10A) \_\_\_\_\_  
 and power forever and ever. Amen.

**OF GLORY BE HIM WITNESS  
 GOD FAITHFUL SINS KING  
 FREED KINGDOM JESUS**



## Notes from Fr. Nick

# Thanksgiving

I'll be spending Thanksgiving away from the parish this year, so I can attend the feast with my family in North Florida. It's been a few years since I last spent Thanksgiving with them. Generally, I avoid traveling over the holidays, because I like spending the time with friends and parishioners here in Berkeley. Travel at this time of year can be an ordeal, and I'm a bit of a "fifth wheel" in the parishes near my family's home.

Lately, though, I've felt the call to connect with family: my mother is 96 and won't be around forever. My brother Tom suffers from Parkinson's and isn't very mobile. Friends and neighbors from my younger days are dying off.



On the positive side, Evinston, the tiny town where my family has lived for generations, celebrates Thanksgiving in a special small-town way. The entire community gathers in the park where we share dinner together. It's easy to meet old friends and neighbors, because they are all in the same place. I understand that my cousin from Australia will be present, and so I won't have to go so far to connect with him.

In a real way, the Thanksgiving celebration in Evinston is the essence of Eucharist. Just as we

gather as a community at Mass, we share our stories and break bread together. While it is not a sacrament in the ecclesial sense, the Thanksgiving celebration points toward the sacrament we share each week.

Perhaps you might raise this idea at your own Thanksgiving celebrations. **Rather than just recounting what you are thankful for, consider relating it to the Eucharist.** You may be surprised how this reflection will deepen your appreciation of our Sunday Eucharist.



**Happy Thanksgiving!**



# St. Mary Magdalen Celebrates Black Catholic Month!

See All 12 Posters in the Church, on the Fence, or at [marymagdalen.org/bcm](http://marymagdalen.org/bcm)  
(You may click on the images in the electronic version of this Bulletin to read their biographies.)



Venerable Pierre Toussaint  
1766 - 1853



Venerable Mary Lange  
1789 - 1882



Venerable Henriette Delille  
1813 - 1862



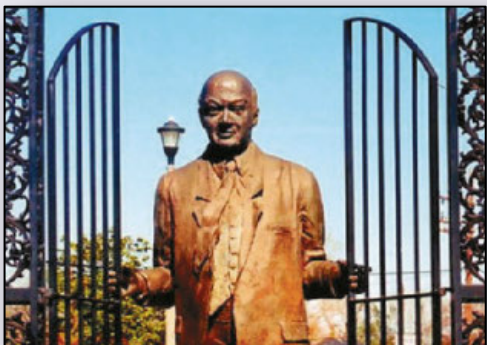
Servant of God Julia Greeley  
(1833/1848 - 1918)



Venerable Fr. Augustus Tolton  
(1854 - 1897)



Fr. Charles Uncles, SSJ  
(1859 - 1933)



A.P. Tureaud  
(1899 - 1972)



Eunice Jackson  
(1926 - 2021)



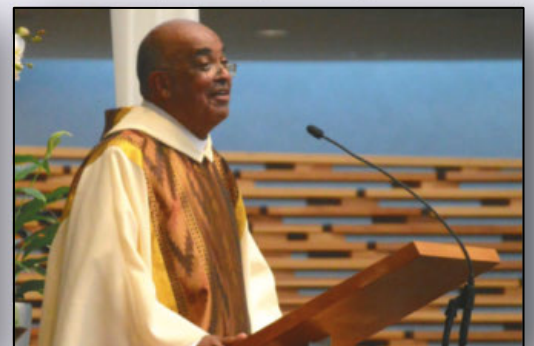
Norman Francis  
(1931 - present)



Maud Green  
(1935 - 2021)



Servant of God Sister Thea Bowman  
(1937 - 1990)



Rev. Fr. Jay Matthews  
(1948 - 2019)

Honorees chosen and biographies composed by members of the St. Mary Magdalen Parish Racial Equity Committee and Madeleine Vice Principal Heather Skinner.



ONE NAME TO REMEMBER  
WHEN IT'S TIME TO  
REMEMBER



EXCELLENT,  
AFFORDABLE  
SERVICES SINCE 1908

SUNSET  
VIEW  
CEMETERY ASSOCIATION  
CEMETERY • CREMATORY • MORTUARY

101 Colusa Avenue  
El Cerrito, CA 94530  
F.D. LIC #1079

CALL US ABOUT PRE-NEED ARRANGEMENTS

SUNSETVIEWMORTUARY.COM  
510.525.5111



LET'S GROW  
YOUR BUSINESS

Place Your Ad Here  
and Support Our Parish!

CONTACT ME  
Donna Touros

dtouros@4LPi.com • (800) 950-9952 x2610



FREE  
AD DESIGN  
with purchase  
of this space

CALL  
800-950-9952

catholicmatch®

California



CatholicMatch.com/CA

Place Your Ad Here and  
Support our Parish!

Instantly create and  
purchase an ad with

AD CREATOR STUDIO



4lpi.com/adcreator

IF YOU LIVE ALONE

MDMedAlert!™ STARTING AT

✓ Ambulance ✓ Police/Fire **\$19<sup>95</sup>**  
✓ Family/Friends ✓ GPS & Fall Alert /mo.

CALL NOW! 800.809.3570

md-medalert.com



SUPPORT OUR ADVERTISERS!

NEVER MISS  
OUR BULLETIN!

SUBSCRIBE

Have our bulletin emailed  
to you every week.



Visit [www.parishesonline.com](http://www.parishesonline.com)



For ad info. call 1-800-950-9952 • [www.4lpi.com](http://www.4lpi.com)

St. Mary Magdalen, Berkeley, CA A 4C 05-1954