



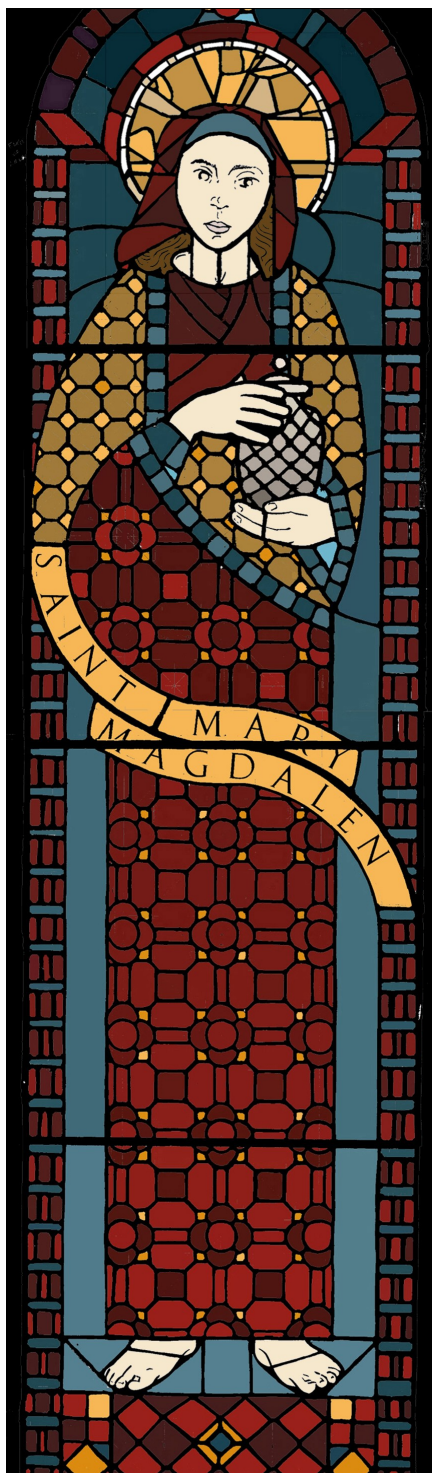
Saint Mary Magdalen Parish

2005 Berryman Street
Berkeley, California 94709

June 3rd, 2018

**Corpus Christi
Year B**

“Together we share our faith in Jesus Christ.
We live the Gospel, and we care for others.”



DAILY MASS SCHEDULE

Monday - Saturday: **8:00 am**

Monday - Friday: **5:30 pm**

SUNDAY LITURGY

Saturday: **5:30 pm** Vigil Mass

Sunday: **8:00, 9:30 & 11:00 am**

LITURGY OF THE HOURS

Monday - Friday: **7:30 am & 5:15 pm**

Saturday: **7:30 am**

RECONCILIATION

Saturdays: 4:00 pm - 5:00 pm

and by appointment

PARISH OFFICE HOURS & PHONE NUMBERS

Monday-Friday

9:00 am - 5:00 pm

Closed for Lunch:

Noon - 1:00 pm

WELCOME TO OUR COMMUNITY.

We are delighted to have all of you here, and we hope you will find our parish a place where you grow spiritually, put faith into action, and encounter Jesus Christ.

Website:

www.marymagdalen.org

Office Phone (510) 526-4811

Office Fax (510) 525-3638

2005 Berryman Street

Berkeley, CA 94709



Next Weekend is EFT Weekend

JUNE 9th & 10th

Sign Up in the Parish Office After All the Masses

OR GO ONLINE

SEE FR. NICK'S COLUMN (page 4) FOR DETAILS.

Parish & School Staff

Fr. Nicholas Glisson, Pastor (ext. 112)
pastor@marymagdalen.org

Norah Hippolyte, Business Manager
nhippolyte@marymagdalen.org (ext. 111)

Andy Canepa, Music Director (ext. 122)
acanepa@marymagdalen.org

Heather Skinner, Director of Religious Education
 (510) 526-4744 hskinner@themadeleine.com

Carolyn Tune, Sacramental Records (ext. 110)
ctune@marymagdalen.org

Jonathan Harmon, S.J., RCIA (ext. 129)
rcia@marymagdalen.org

Oscar Guillen, Facilities Supervisor
Ana Guillen, Housekeeper

Fr. Ioane Patita Ono, In Residence (ext. 124)
ioaneono@marymagdalen.org

Fr. Laurent Okitakatshi, In Residence (ext. 125)
lokitakatshi@marymagdalen.org

Parish Pastoral Council

Katie Strausser, Chair
ppc@marymagdalen.org

Parish Finance Council

Ann Flemer, Chair
theflemer@aol.com

School of the Madeleine

1225 Milvia Street
 Berkeley, CA 94709
 (510) 526-4744

Ken Willers, Principal
kwillers@themadeleine.com

Mary Schweska, Secretary
mschweska@themadeleine.com

Cat Nielsen, Volunteer Webmaster
website@marymagdalen.org (ext. 113)

Laura Morland, Volunteer Bulletin Editor
bulletin@marymagdalen.org (ext. 118)

Funeral Services (CFCS):
Deacon Dave Holland: (925) 932-0900



Parish Calendar: June 2018

| | |
|----------------------------|---|
| June 2-3 Weekend | Berkeley Food Pantry Collection Deposit your donations in either vestibule. |
| June 3 Sunday | 1st Sunday Dinner for the Poor 12:00 (set up); 3:00 pm (dinner), Parish Hall |
| June 4 Monday | Parish St. Vincent de Paul Conference 7:15 pm, Norton Hall. <i>All are welcome!</i> |
| June 8 Friday | School of the Madeleine: Baccalaureate Mass 9:00 am, Church |
| June 8 Friday | School of the Madeleine: Graduates' Breakfast After Baccalaureate Mass, Parish Hall |
| June 9 & 10 Weekend | EFT (Electronic Funds Transfer) Weekend Sign up in the Parish Office after Mass |
| June 9 Saturday | Book Group: <u>Ordinary Grace</u> (see p. 6) 10:00 am, Parish Conference Room |
| June 9 Saturday | CONCERT: <u>Coro d'Amici</u> 7:30 pm, Church |
| June 10 Sunday | CONCERT: Favalore 2:00 pm, Church |
| June 12 Tuesday | CONCERT: <u>School of the Madeline Band</u> 7:00 pm, Parish Hall |
| June 14 Thursday | School of the Madeleine Last Day of School until August 27th |
| June 15 Friday | Refugee Aid Committee Meeting 4:00 pm, Parish Conference Room |
| June 17 Sunday | SFEMS: <u>Music Discovery Workshop</u> 2:00 pm, Parish Hall |
| June 18, 19, 20, 21, 22 | SFEMS: <u>Music Discovery Workshop</u> 9:00 am, Parish Hall |
| June 22 Friday | CONCERT: Music Discovery Workshop 6:00 pm, Parish Hall |
| June 24 Sunday | 4th Sunday Dinner for the Poor 12:00 (set up); 3:00 pm (dinner), Parish Hall |
| June 24 Sunday | SFEMS <u>Classical Music Workshop</u> 5:00 pm, Parish Hall |
| June 25, 26, 27, 28, 29 | SFEMS <u>Classical Music Workshop</u> 9:00 am, Parish Hall |
| June 29 Friday | CONCERT: Classical Music Workshop 6:00 pm, Parish Hall |

East Bay Presentation Reunion Party **TODAY** from 1:00-3:00 pm

All friends of the Sisters of the Presentation and all alumnae of their schools are invited to a Reunion Party **today** at 2116 Jefferson Ave., University Terrace, Building 9, site of (the former) **Presentation High**, on the ground floor facing the grotto side. **Alumnae and friends, come and share your school memories**

Body and Blood of Christ ~ June 3rd, 2018

Weekly Collection: May 14th — 20th

| Sunday | Actual | Budget | Difference |
|---------------|-------------|--------------|-------------|
| 05/27/2018 | \$6,343.00 | \$8,255.00 | -\$1,912.00 |
| Year-to-Date: | \$180,652.6 | \$186,100.00 | -\$5,447.39 |

EFT is very helpful, especially on holiday weekends. We are offering assistance for EFT sign-ups next weekend (see p. 4).

Berkeley Food Pantry Collection Pickup This Weekend

Please Bring One or More of the Following Items to the Vestibules **TODAY**

- Canned **tuna & chicken**—low-sodium & low-fat
- **Peanut butter** (in plastic jars only)
- **Breakfast cereal**—low-sugar
- Canned **soups & beans**—low-sodium
- Canned **beans** (low-sodium) & **Brown rice**
- **Healthy snack foods** for kids—low-sugar nutrition bars and dried fruit
- **Gluten-free grains & pasta**
- **Non-dairy milk**—soy, almond, oat (shelf-stable)
- **Condiments**—ketchup, mustard, salad dressing, & mayonnaise (in plastic jars only)
- **Seasonings**— salt, pepper, herbs, spices,
- **Cooking oil**—including olive oil
- **Teabags**—in boxes
- **Meal replacements**
- **Toiletries**—toothbrushes, toothpaste, shampoo, soap, deodorant, feminine hygiene products, etc.

Bishop's Appeal: No Update Available



So many parishes have met their appeal goal that the Diocese is now updating less frequently. As of May 17, 2018, however, 65 people had donated **94.10%** of St.

Mary Magdalen's Bishop's Appeal goal. Our goal this year is **\$27,700.00**, and we have raised (at least) **\$26,064.99**. If you have not yet contributed, you may donate to the Diocese here: tinyurl.com/BishopsAppeal, use a pew envelope, or go to our own donations site: marymagdalen.org/donate.

School Families: Sign Up for EFT Next Weekend!

Would you like an easy, guaranteed way to obtain (or maintain) your *parishioner discount*? Sign up for EFT (Electronic Funds Transfer) on June 9th and 10th. Just come to the Parish Office after any Mass. Or sign up online anytime: marymagdalen.org/donate



School of the Madeleine

Your Catholic school in Berkeley.
Parishioners are our priority!
Call for tour: (510) 526-4744
www.themadeleine.com

Mass Intentions

| | | |
|-----------|-------|---|
| Saturday | 5:30 | Doris Irene Elder RIP |
| Sunday | 8:00 | Intentions of Br. Peter Ciolino, OFM Cap. |
| | 9:30 | Christine Ndzefer Ngwane RIP |
| | 11:00 | For the People of the Parish |
| Monday | 8:00 | Eric Robert Lee RIP |
| | 5:30 | Philip Edward Doran RIP |
| Tuesday | 8:00 | Waltraut Körner RIP |
| | 5:30 | Intentions of Alfonso Ramirez |
| Wednesday | 8:00 | John Aguiar, Jr. RIP |
| | 5:30 | Mary Lee Lao RIP |
| Thursday | 5:30 | May Kwok RIP |
| Friday | 8:00 | Intentions of Taylor Nicole Kandris |
| | 5:30 | Mary Pilz RIP |
| Saturday | 8:00 | Sharlene Evans RIP |



At **Noon** on **Thursday, July 12th, 2018**, Fr. Nick will hold the 3rd in a continuing series of quarterly luncheons with parish 'seniors' in the Parish Hall. **Save the Date!** All parish seniors—or parishioners of any age—are invited to participate. **Registrations will be taken later in the month.**

Notes from Fr. Nick

Electronic Funds Transfer (EFT)

The way people handle money has undergone massive changes in the last 50 years. Ever since Bank of America issued the first Visa Cards (originally called BankAmericard) in the mid 1960s, people all over the world have begun to pay for goods and services electronically far more often than with cash. Even writing checks is less common. Personally, I write fewer than ten checks per year, and I conduct much of my business online.

St. Mary Magdalen Parish reinstated EFT last year, and more recently we have actively promoted it as the primary way for parishioners to donate. *What is EFT?* EFT is a program that directs your bank to electronically deduct a specified amount from your checking (or credit card) account on a regular basis for recurring expenditures. People often use this same method to make their mortgage or car loan payments.

Some parishioners have voiced a few concerns about EFT. First, *is it safe?* Yes, in order to engage in online transactions, banks must meet rigorous encryption standards. In addition, the parish office has established special security procedures to safeguard your personal information. (Unlike in the past, we do not have access to your banking information.) Second, *doesn't the banking service that handles EFT charge the parish a fee?* Yes, but it also costs us money to process checks, and the cost is nominal. (If you choose to have a credit card debited—rather than your checking account—you may check the box to also donate a nominal amount to offset the credit card processing fee.)

Third, *doesn't EFT diminish the act of giving at the offertory during Mass?* It doesn't have to. Simply write "EFT" (with your name) on an empty offertory envelope and place it in the collection basket as you normally would. The envelope will be a symbol of your electronic gift.

What advantage does EFT provide for the parish? We all have reasons to be away from St. Mary Magdalen a few times a year, and not many of us remember to make up our contribution for the weeks we are away. One family missing an offering a few times a year may not seem like much, but when multiplied 500 times (the approximate number of active families in the parish), it amounts to a large sum. Other pastors have told me that using EFT amounts to receiving an "extra collection" every month! In our case, a monthly "extra collection" would make the difference between running a deficit and financial stability.

Next weekend (June 9th & 10th), a volunteer will be in the office after each liturgy to help you sign up for EFT. Or you can sign up anytime online at marymagdalen.org/donate. If you have any questions, please give us a call at 526-4811. We can explain EFT and walk you through the signup process.

The screenshot shows a web form titled "Donations" with the heading "Electronic giving is back and better than ever!". Below the heading is a note: "If you've already created a profile, please 'Log In' on the right; otherwise continue below." The form is divided into sections: "General Fund" with a "Sunday Donation" field set to 0.00; "Parish Special Collections" with fields for "Refugee Aid", "School of the Madeleine", "St. Vincent de Paul Society", "Mexicali Mission Support", "Food for the Poor", and "Capital repair & improvements", all set to 0.00; and "Diocesan Collections" with fields for "Bishop Annual Appeal" and "Catholic Communications", also set to 0.00. A "Total:" field shows \$0.00. At the bottom, there are fields for "Donation Frequency:" (a dropdown menu with options: Choose One, One Time, Weekly, Monthly, Semi-Monthly, Quarterly, Annual), "Donation Start Date:" (m/dd/yy), and "Donation End Date:" (optional, m/dd/yy). A "Continue" button is located at the bottom left of the form.

Some of the options you'll find available on our [donations page](#).

Parish News

Help Needed For Today's Sunday Dinner!

You've heard the phrase, "it takes a village." When it comes to the **Dinners for the Poor and Homeless**, it takes a parish. We asked for help last week, and you showed up eager to work. We also received many donations of desserts. Thank you—you are the reason these Dinners thrive!

We're entering the doldrums of summer, June through Labor Day, when volunteer numbers always nosedive. We look forward to your continued support. The first opportunity to help is this weekend's 1st Sunday Dinner.



Rea Galang prepares freshly-cut tomatoes for the salad.

Whatever time you can spare, we'll gladly take it. No experience is needed. We set up and cook from **Noon to 1:00 pm**; prepare to serve at **2:45 pm**, and clean up at **3:30 pm until closing**. We always need help cleaning the Kitchen and Parish Hall. *Donations of desserts may be brought to the Parish Hall by 1:30 pm.*

New to the Parish? Just take the steps leading down from the parking lot and turn left to find the Parish Hall.

SAVE THE DATE!

Combined Parish + School Picnic Sunday, August 26th, Noon-5:00 pm

Put August 26th on your calendar for a **free picnic** to start off the Fall, with games and prizes for all. Location: **Live Oak Park**. Details forthcoming....

Social Justice Notes

The Poor People's Campaign

The Poor People's Campaign, A National Call for Moral Revival: 40 days of Demonstrations From May 13th to June 23rd. Since May 13th, hundreds of poor people, along with faith and movement leaders, have taken to the streets to challenge systemic racism, poverty, ecological destruction, and the war economy. The aim is to send a firm message to elected officials that their support for the status quo will no longer be tolerated.

The [theme for the fourth week](#) (June 3rd-9th) of the Campaign is "*Ecological Devastation and Health—Clean Air, Clean Water, and Health for All.*" This will be a week of action focusing on the rights to universal healthcare and a healthy planet.

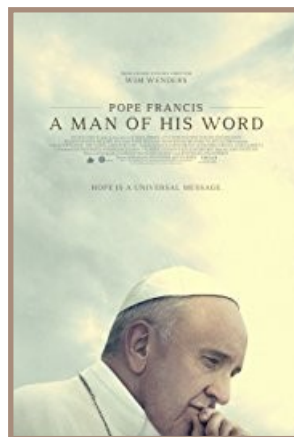
Note: The Campaign and all its participants and endorsers embrace nonviolence, and have made it clear that violent tactics or actions will not be tolerated.

For more information about the Poor People's Campaign and/or to give your financial support, go to poorpeoplescampaign.org.

Don't Forget to Vote on Tuesday!

Catholic Social Justice teaches us that we have a responsibility to participate in politics, out of a concern and commitment to the good of the community. As Pope Francis famously said (in a homily on September 16, 2013): "*sometimes we hear: a good Catholic does not meddle in politics. That is not true.... A good Catholic meddles in politics, offering the best of himself so that the leader can govern.*"

Pope Francis: A Man of His Word



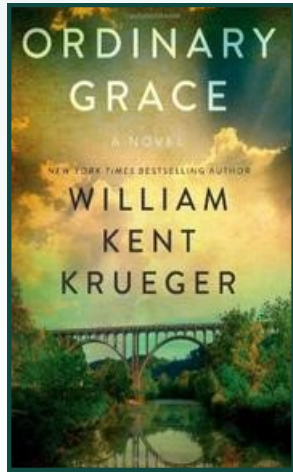
A [film](#) about our Pope is now playing in several local theaters, including the Albany Twin on Solano. The *San Francisco Chronicle* calls it "*a compelling documentary about this remarkable pontiff.*" We recommend this movie highly for anyone who is concerned about social justice and the environment.

Parish Book Group Meeting: *This Saturday at 10:00 am*

The parish Book Group invites you to join us in the Conference Room to discuss **William Kent Kreuger's *Ordinary Grace***.

Set in Minnesota, where both Kreuger and our founder, **Fr. Cassian Lewinski, OP**, grew up, the novel takes place at a time when, states the *Kirkus Review*, "the tension with the region's Indian population remains palpable," and a number of deaths take place that "shake the world of Frank Drum, the 13-year-old narrator."

An accomplished and successful mystery writer, William Kent Kreuger's foray into the traditional novel is, according to Tucker Shaw of the *Denver Post*, "both fresh and familiar... and it is emotionally affecting as well."



School Corner

News from the School of the Madeleine

"Say au revoir, but not goodbye!"

Last week Principal Willers announced several forthcoming departures: 1st-grade teacher, **Tia Warren**; 7th-grade Humanities teacher, **Amy Reagan**; 7th-grade teacher, **Ryan Smith**; and Kindergarten teacher, **Brian Holbert**. However, Mr. Willers devoted the most space to a letter [excerpted below] from **Lauren Mezey**, a longtime 6th-grade Humanities teacher:

I'm excited to begin the next phase of my life, but I'm sad, too. I still remember the spring day, 17 years ago, when I came to be interviewed by then-principal Mitch Calegari. He was standing on a chair in his office, holding a large clock he had to aim toward the ceiling to reprogram all the other clocks in the school. There was an enigmatic painting of a sheep behind the secretary's desk and a clamor in the hallway as a snake, having slithered downstairs from the sixth-grade classroom, was being pursued by three laughing boys. The whimsical nature of these spectacles, and Mr. Calegari's statement that he wanted "all the children here to feel loved by God," was enough to convince me that "here" was where I wanted to be. A couple of months later, I entered a beautiful classroom with leafy trees outside the windows, and my adventure began.

In the ensuing years, I've learned so much about 'big' history and comparative religion, and about teaching and managing groups of slightly wild 11- and 12-year-olds. I've passed through the halls, listened at other doorways, and discovered the gratification of being part of a community of teachers committed to bringing out the best in their students. I've been deeply touched by parents - by their love for their children and their expressions of appreciation for us. I've been encouraged by Ken and comforted, almost every day, by Mary. Most of all - gosh! - I've enjoyed the children themselves. I've been frustrated by them at moments, yes, but more often moved and even overjoyed by their randomness, funniness, kindness, creativity and downright brilliance.

~ **Lauren Mezey**, Madeleine Teacher 2001-2018

Catholic Charities:

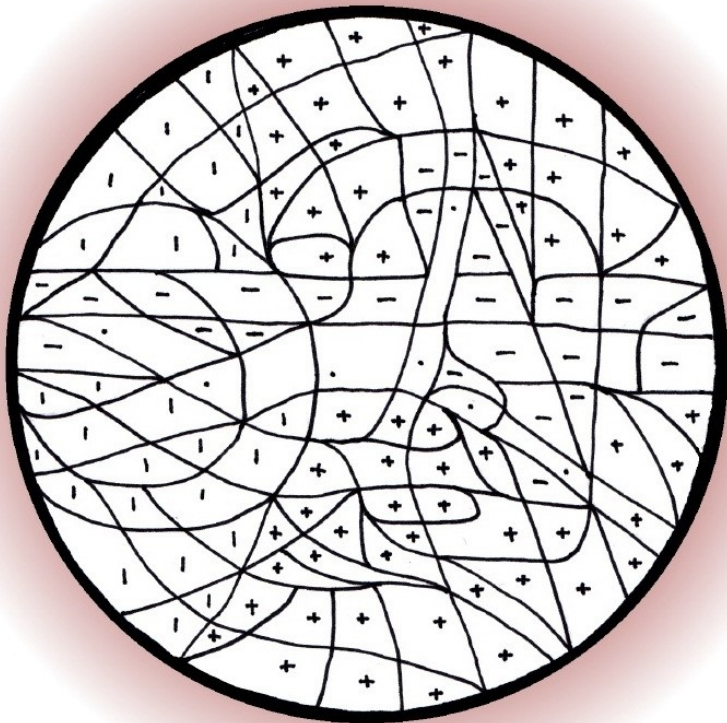
Annual Collection on June 9th & 10th



We are called by Pope Francis "to go the margins" and help our brothers and sisters, near and far. Every year, we are invited by our Church's charitable arm, **Catholic Charities of the East Bay**, to 'make all things possible' for those on the margins. Your gift makes it possible for our Church to help people facing difficult circumstances so that they can move forward in life with greater independence. This includes our children who face pervasive violence at school, at home, or on the streets; families or seniors facing homelessness; and people fleeing violence in their homelands. We thank you for supporting **Catholic Charities** every year. Your parish's gifts will touch the lives of many in the East Bay. Please give generously to this appeal on June 9th and 10th. For more information, you may contact **Steve Mullin**, Chief Development Officer, at (510) 768-3165 or smullin@cceb.org.

The Kids' Bulletin

Feast of the Body and Blood of Christ
(Corpus Christi)



What does the bread become when the priest

consecrates it at Mass?

Use the colour code to find out:

- grey · skin colour
- ! brown + blue

thekidsbulletin.wordpress.com

Body and Blood of Christ

Word-Find

M H Y B M A N Y O U L
 S O U L A S T C C O D
 R L D O S U H O H G I
 P Y A O S P I M R I V
 O B O D Y P S M I V I
 U R N R J E S U S E N
 R E D I M R Y N T N I
 E A T N G O W I N E T
 D D D K M E M O R Y Y
 C H A L I C E N G O D

See if you can find all the words written in CAPITALS. Use the left-over letters to fill in the blanks to make a little prayer you can say at Mass!

At the LAST SUPPER, after he had GIVEN thanks, JESUS took BREAD and said, "Take and EAT. THIS is my BODY." Then, taking the chalice of WINE, he said, "Take this, all of YOU, and DRINK from it. This is the CHALICE of my BLOOD, the blood of the new and everlasting covenant. It will be POURED out for you and for MANY for the forgiveness of sins. Do this in MEMORY of me."

That was the first MASS. When you go to HOLY COMMUNION, you really receive the Body, Blood, SOUL and DIVINITY of CHRIST, who is GOD!

