



I



II



III



IV



V



VI



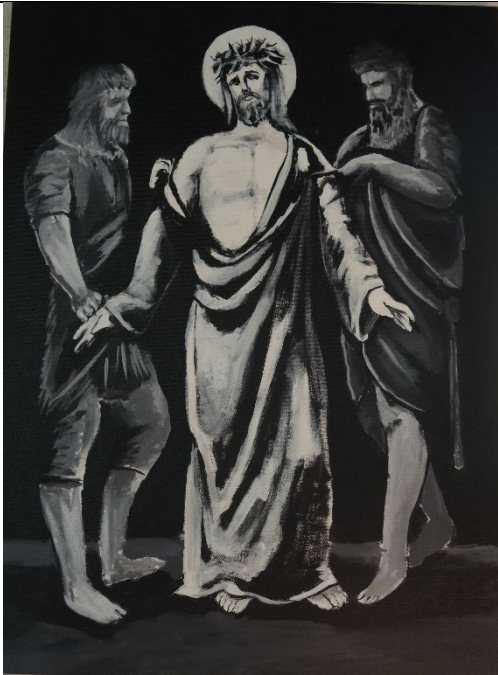
VII



VIII



IX



X



XI



XII



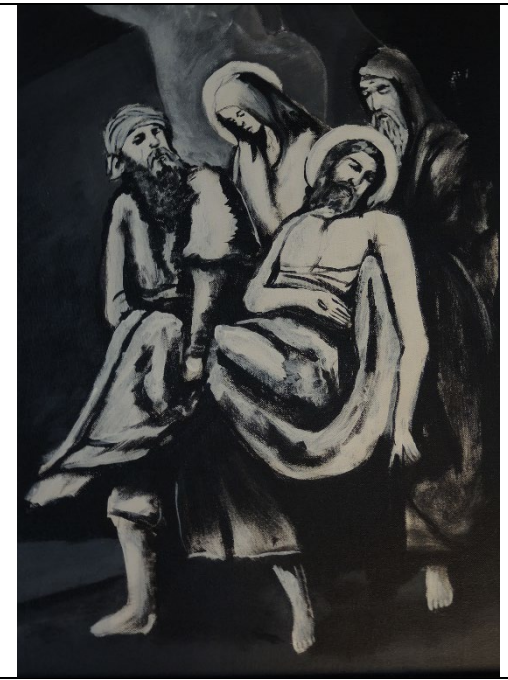
XIII

Stations of the Cross
Designed by Dcn. Jonathan Harmon, S.J.
and
Fr. Nicholas Glisson
Pastor, St. Mary Magdalen Church

Painted by 7th Grade students of
The School of the Madeline
2019



Copyright 2020



XIV