

St. Mary Magdalen Catholic Parish

December 6th, 2020
Second Sunday in Advent

Rev. Nicholas Glisson, Pastor
His Excellency, Michael Barber, SJ, Bishop – Diocese of Oakland

Notes from Fr. Nick

Our Lady of Guadalupe



Every December we celebrate two important solemnities dedicated to the Blessed Mother. This coming Tuesday is the **Feast of the Immaculate Conception**, on which we celebrate the Mystery of Mary being born without the stain of Original Sin. Our liturgy will be celebrated at **8:30 a.m.** and **5:30 p.m.** There will be a livestream Mass at **7:30 p.m.**

Next Saturday, we will celebrate the **Feast of Our Lady of Guadalupe**. Our celebration will take place during the regularly scheduled Mass at **8:30 a.m.** (5:30 p.m. will be the Vigil for the Second Sunday of Advent.)

The Feast of Our Lady of Guadalupe celebrates the apparition of our Blessed Mother in the Americas. People with Northern European backgrounds may not fully appreciate the role Our Lady of Guadalupe has in the life of our brothers and sisters to the south. She is at the very heart of Latino identity. Understanding cultural diversity must include an appreciation of the Blessed Mother, and the significance of her appearance to the peasant Juan Diego.

It is fitting that we honor Mary during Advent. It was her “yes” to God that made the Incarnation (Christmas) possible. Celebrating the Immaculate Conception and the Virgin of Guadalupe ratifies our belief that the Paschal Mystery began with one humble girl’s acceptance of the will of God in her life.

The Giving Tree Needs Our Help!

At last Sunday’s Masses, Fr. Nick challenged Mary Magdalen parishioners to rise to the occasion and support our Holiday Outreach Program, as we have done for the past 29 years. The *Giving Tree* is in its usual spot in front of the Blessed Sacrament Chapel, but you don’t need to come to the church to help out – you may mail or drop off a check at the parish (please put « Holiday Outreach » or « Giving Tree » on the memo line). Or you may donate online, by selecting *Holiday Outreach* at marymagdalen.org/donate. Thank you!

*“Together we share our
Faith in Jesus Christ.*

*We live the Gospel,
and we care for others.”*

PUBLIC MASSES

Saturday 5:30 pm—Church
Sunday 11:00 am—Dominican Garden

OFFICE HOURS

Monday—Friday 9:00 am - 5:00 pm
Closed for Lunch: Noon-1:00 pm
Phone: 510-526-4811

WEBSITE

marymagdalen.org



SACRAMENT OF RECONCILIATION

Saturday 4:00 pm
(and by appointment)

2005 Berryman Street | Berkeley, CA 94709 | 510-526-4811 | marymagdalen.org

Parish & School Staff

Fr. Nicholas Glisson, Pastor
pastor@marymagdalen.org (ext. 112)

Norah Hippolyte, Business Manager
nhippolyte@marymagdalen.org (ext. 111)

Andy Canepa, Music Director
acanepa@marymagdalen.org (ext. 122)

**Heather Skinner, Director of Religious Education
 & VP, School of the Madeleine**
hskinner@themadeleine.com

Deacon Jeff Burns, Parish Renewal
jburns@marymagdalen.org

Cat Nielsen, Parish Technologist
 RCIA Coordinator
website@marymagdalen.org (ext. 113)

Carolyn Tune, Office Assistant
ctune@marymagdalen.org (ext. 110)

Oscar Guillen, Facilities Supervisor
Ana Guillen, Housekeeper

Fr. Ioane Patita Ono, In Residence
ioaneono@marymagdalen.org (ext. 124)

Fr. Anthony Nwankwo, MSM, In Residence
anwankwo@marymagdalen.org (ext. 126)

Parish Pastoral Council
Kristin Collins, Convener
ppc@marymagdalen.org

Parish Finance Council
Ann Flemer, Chair
theflemer@aol.com

Laura Morland
 Volunteer Bulletin Editor
bulletin@marymagdalen.org (ext. 118)

St. Vincent de Paul Conference (ext. 787)

School of the Madeleine
 1225 Milvia Street
 Berkeley, CA 94709
 (510) 526-4744

Joseph Nagel, Principal
jnagel@themadeleine.com

Jennifer Walwark, Vice-Principal
jwalwark@themadeleine.com

Mary Schweska, Secretary
madmary@themadeleine.com

CFCS Funeral Services 510-223-2165



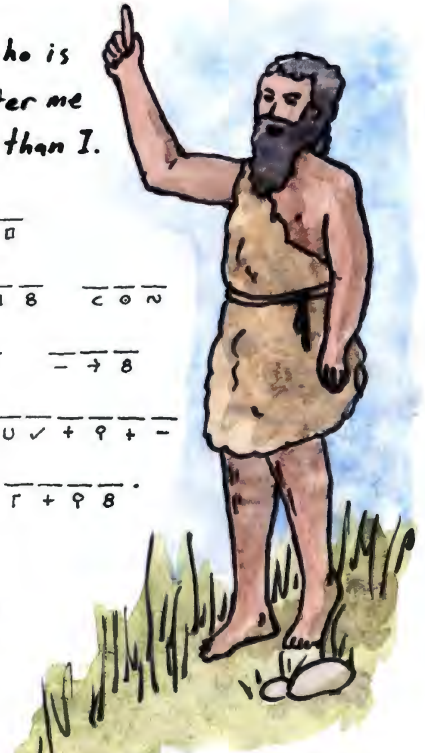
The Kids' Bulletin

The one who is coming after me is mightier than I.

→ 8 Δ + □ □
 x n ✓ - + l 8 c o n
 Δ + - → - → 8
 → o □ c u ✓ + ♀ + -
 n < γ γ + ♀ 8 .

What did Saint John the Baptist say about the one who was coming after him? Use the code to find out!

η κ γ θ ρ τ → + □ < o ✓ ♀ u - ~ Δ c i
 A B D E F H I L N O P R S T U W Y Z



thekidsbulletin.com

Peace Among the Animals

In today's first reading, the prophet describes peace between animals and people in God's kingdom. Can you figure out which animals (or people) go with which? Clue: the pictures might help!

Then the wolf shall be a guest of the _____, and the _____ shall lie down with the kid; the _____ and the young lion shall browse together, with a little child to guide them. The cow and the _____ shall be neighbors, together their young shall rest; the _____ shall eat hay like the ox. The _____ shall play by the cobra's den,



baby leopard
 calf bear
 lamb lion



December 6th, 2020 – Second Sunday in Advent

Collection for the Week Ending November 29 th			
Sunday	Actual	Budget	Difference
11/29/2020	\$6,400.26	\$8,829.00	-\$2,428.74
Year-to-Date	\$393,585.18	\$434,963.00	-\$41,377.82

"Rouse your power and come to save us." - Psalm 80:3

Support Andy's Musical Fundraiser!

Andy Canepa is celebrating his 15 years as Music Director in our parish *and* the 250th birthday of Ludwig van Beethoven by creating a fundraiser. (*Details at right.*) Buying a **streaming ticket** will enable you to view the prerecorded concert next weekend. The **live performances** will take place on Beethoven's birthday eve and the birthday itself. Only 9 tickets can be sold for each of the two live concerts, so call the parish now! [*Tickets cannot be purchased online.*] Parishioner Lourdes Guzman is catering a **German feast** to complement the concert. (Food pickup in Norton Hall.)

- ◆ *Deadline for ordering food:* Noon, Tue., Dec. 8th
- ◆ *Deadline for ordering tickets:* Noon, Fri., Dec 11th

Scripture Readings for the Week

- 6th **SECOND SUNDAY IN ADVENT**
Isaiah 40:1-5, 9-11 / 2 Peter 3:8-14 / Mark 1:1-8
- 7th **Memorial: St. Ambrose, Bishop & Doctor**
Isaiah 35:1-10 / Luke 5:17-26
- 8th **Solemnity: IMMACULATE CONCEPTION OF MARY**
Genesis 3:9-15, 20 / Ephesians 1:3-12 / Luke 1:26-38
- 9th **Advent Weekday [St. Juan Diego Cuauhtlatoczin]**
Isaiah 40:25-31 / Matthew 11:28-30
- 10th **Advent Weekday [Our Lady of Loreto]**
Isaiah 41:13-20 / Matthew 11:11-15
- 11th **Advent Weekday [St. Damasus I, Pope]**
Isaiah 48:17-19 / Matthew 11:16-19
- 12th **Feast: Our Lady of Guadalupe**
Revelation 11:19; 12:1-10 / Luke 1:26-38

Mass Intentions

Saturday	5:30	For the People of the Parish
Sunday	9:00	Luc McSweeney Maheu RIP
	11:00	Barbara Gamba RIP
Monday	8:30	Elisa Adorna RIP
	5:30	Joe McGruder RIP
Tuesday	8:30	Intentions of Norah Hippolyte
	5:30	Joe McGruder RIP
Wednesday	8:30	Pete Hurd RIP
	5:30	Joe McGruder RIP
Thursday	8:30	Lenna Lopes
	5:30	Joe McGruder RIP
Friday	8:30	Oscar Ronai RIP
	5:30	Intentions of Lee Guerrero
Saturday	8:30	Barbara Gamba RIP



A Tribute to Beethoven

250 YEAR BIRTHDAY CELEBRATION
FEATURING
ANDY CANEPA, SOLO PIANO

STREAMING
SATURDAY, DECEMBER 12, 7 P.M.
SUNDAY, DECEMBER 13, 3:00 P.M.
SUGGESTED DONATION \$10-\$20

LIVE PERFORMANCES
TUESDAY, DECEMBER 15, 7 P.M.
WEDNESDAY, DECEMBER 16, 7 P.M.
ST. MARY MAGDALEN CHURCH, BERKELEY
LIVE CONCERT \$50 - TICKETS LIMITED

FEAST TO GO
SATURDAY, DECEMBER 12
LOURDES GUZMAN, CHEF
GERMAN FEAST \$30 OR 4/\$100
MUST BE ORDERED BY SATURDAY, DECEMBER 5

SEE DETAILS AT MARYMAGDALEN.ORG
ADVANCE RESERVATIONS REQUIRED FOR ALL EVENTS
CALL 510.526.4811

PROCEEDS TO BENEFIT
SAINT MARY MAGDALEN CATHOLIC CHURCH

SAVE THESE DATES

- December 8th, 7:30 pm: **Immaculate Conception**—Livestreamed
- December 14th, 7:30 pm: **Penance Service** — Livestreamed
- December 15th, 9:00-9:30 am: **Confessions**—Chapel
- December 16th, 9:00-9:30 am: **Confessions**—Chapel
- December 15th, 6:00-6:30 pm: **Confessions**—Chapel
- December 16th, 6:00-6:30 pm: **Confessions**—Chapel
- December 24th, 1:00 pm: **Family Mass**—Dominican Garden
- December 24th, 8:00 pm: **Christmas Vigil Mass**—Livestreamed
- December 25th, 11:00 am: **Christmas Mass** — Dominican Garden

Free Money for the Madeleine?

With Christmas approaching and the pandemic still raging, more of us are ordering online these days. If you choose to use Amazon, instead of the usual site, please go to smile.amazon.com and select **School of the Madeleine** among the charities. You'll remain in your own account, but a bit of your purchase price will be donated to our parish school!

Protecting **Seniors**
Nationwide

Medical Alert System

\$29.95/Mo. billed quarterly

- One Free Month
- No Long-Term Contract
- Price Guarantee
- Easy Self Installation

Call Today! Toll Free 1.877.801.8608



ONE PARISH

Grow in your faith,
find a Mass, and
connect with your
Catholic Community
with OneParish!



Download Our Free App or Visit
www.MY.ONEPARISH.com



If You Live Alone You Need MDMedAlert!

✓Ambulance 24 Hour Protection at HOME and AWAY!

- ✓Police
- ✓Fire
- ✓Friends/Family

FREE Shipping

Solutions as Low as

FREE Activation

\$19.⁹⁵ a month

NO Long Term Contracts



This Button SAVES Lives!
As Shown GPS, Lowest Price Guaranteed!

CALL NOW! **800.809.3352**

GPS Tracking w/Fall Detection
Nationwide, No Land Line Needed
EASY Set-up, NO Contract
24/7 365 Monitoring in the USA



MDMedAlert
Safe-Guarding America's Seniors Nationwide!



FLOOR DIMENSIONS, INC.

CARPET - VINYL - HARDWOOD - TILE
LINOLEUM - LAMINATE

10% OFF WITH THIS AD
Family Operated since 1986

info@floordimensions.com

1081 Eastshore Hwy
Albany, CA, 94710
Between Gilman and Buchanan
510-525-5656



Take your
FAITH
ON A
JOURNEY.

Catholic Cruises and Tours (CST 2117990-70)

Catholic Cruises and Tours
and The Apostleship of the Sea
of the United States of America

Catholic Cruises/Tours to Worldwide Destinations

Call us today at 860-399-1785 or email

eileen@CatholicCruisesandTours.com

www.CatholicCruisesandTours.com

ONE NAME TO REMEMBER
WHEN IT'S TIME TO
REMEMBER

EXCELLENT, AFFORDABLE
SERVICES SINCE 1908



**SUNSET
VIEW**

CIMILERY ASSOCIATION
CEMETERY • CREMATORY • MORTUARY

101 Colusa Avenue
El Cerrito, CA 94530
F.D. LIC #1079

CALL US ABOUT
PRE-NEED ARRANGEMENTS

SUNSETVIEWMORTUARY.COM • 510.525.5111

MATT BOWMAN

**COMPLETE
TREE CARE**

FREE ESTIMATES

- Trimming / Removal
- Aesthetic Tree

Maintenance

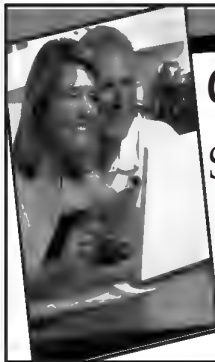
- Disease and Pest
Diagnosis

• 20 Years Experience

• Fully Insured

P.L. & P.D.

510-883-1748



Get this weekly bulletin delivered by email - for FREE!

Sign up here:

www.jspaluch.com/subscribe

Courtesy of J.S. Paluch Company, Inc.



FINDaPARISH.com

The Most Complete

Online National

Directory of

Catholic Parishes

Check It Out Today!

catholicmatch[®]
California



CatholicMatch.com/myCA